

FLAGSHIP
corporate center



775 PRAIRIE CENTER DRIVE
EDEN PRAIRIE, MN 55344



naturally
connected

LEASED BY

CBRE

OWNED & MANAGED BY

 **ALTUS**



FLAGSHIP CORPORATE CENTER
at-a-glance



FOUR-STORY OFFICE BUILDING



139,353 SF BUILDING SIZE
34,706 SF AVERAGE FLOOR SIZE



3.49/1,000 PARKING RATIO
AMPLE SURFACE AND EXECUTIVE PARKING



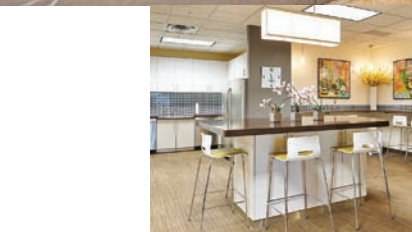
OUTDOOR PATIO OVERLOOKING
NATURAL WETLANDS



BEAUTIFUL ATRIUM STYLE LOBBY WITH
CLEAR EXTERIOR VIEWS



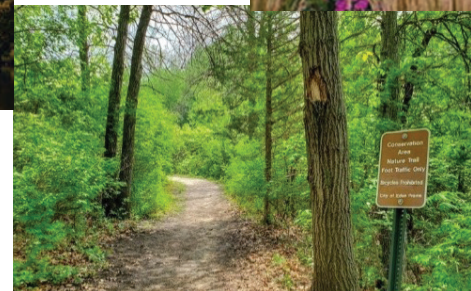
ABUNDANCE OF NATURAL LIGHT

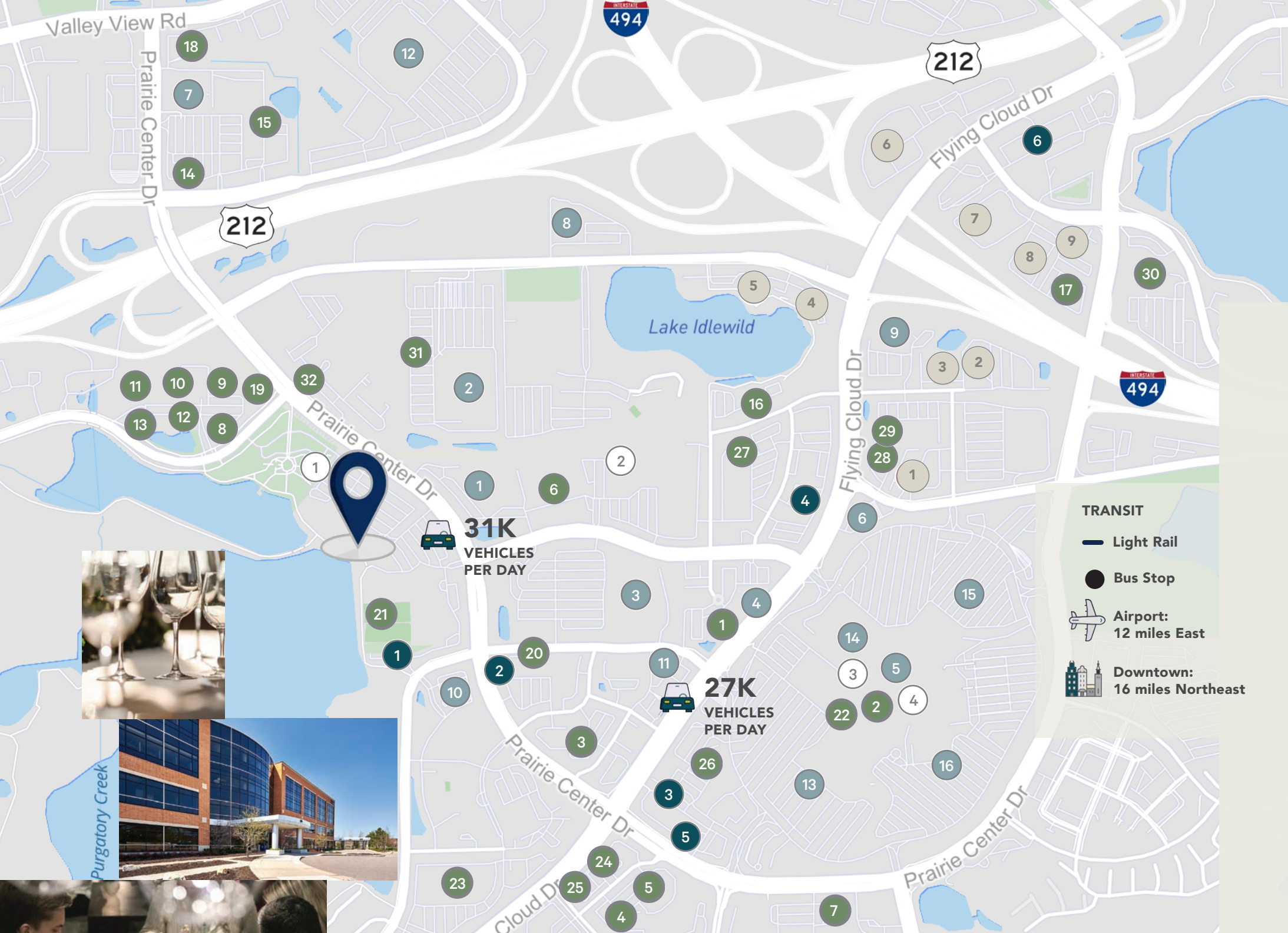


WHERE WORK IS
second nature

Nature reminds us that we are part of something larger than ourselves — increasing trust, cooperation, and closeness with others. Flagship Corporate Center is surrounded by the best of the natural world. Nearby Purgatory Creek Park, a 200-acre nature preserve, offers the opportunity to bike or hike a paved trail winding through gardens and wetlands.

Work in an environment that reflects it's natural connection.
Work at Flagship.





AT THE crossroads

Flagship Corporate Center sits just southwest of the intersection of three major highways in the 494 corridor and is conveniently located near an abundance of amenities. Eden Prairie Center, a completely-renovated 1.4 million SF shopping center near Flagship, boasts 13 million shoppers annually and is anchored by popular major retailers. Flagship also neighbors Life Time Fitness, providing access to a best-in-class fitness experience.



Work with convenience, where life and work intersect. Work at Flagship.

TRANSIT
 Light Rail
 Bus Stop
 Airport: 12 miles East
 Downtown: 16 miles Northeast

Miles of Trails **6**
 Bike Score **68**

- DINING**
 - 1 Kona Grill
 - 2 Wildfire
 - 3 Fat Pants Brewing Co.
 - 4 Pizza Karma
 - 5 Applebee's
 - 6 Old Chicago Pizza & Taproom
 - 7 The Original Pancake House
 - 8 Café Zupas
 - 9 Jersey Mike's
 - 10 Chipotle Mexican Grill
 - 11 Rusty Taco
 - 12 Naf Naf Grill
 - 13 Noodles and Company
 - 14 Culver's
 - 15 Starbucks
 - 16 Redstone
 - 17 Pizza Luce
 - 18 Peoples Organic
 - 19 Five Guys
 - 20 Kyoto Sushi
 - 21 Rare Steak & Sushi
 - 22 Melts & Burgers
 - 23 Crumbl Cookies
 - 24 Taco Bell
 - 25 Wendy's
 - 26 Red's Savoy Pizza
 - 27 Champps
 - 28 Smashburger
 - 29 QDOBA
 - 30 FRGMNT Coffee
 - 31 Caribou Coffee
 - 32 Brick & Bourbon
- LODGING**
 - 1 Best Western
 - 2 SpringHill Suites
 - 3 TownePlace Suites
 - 4 Hampton Inn
 - 5 Extended Stay America
 - 6 Residence Inn by Marriott
 - 7 Sonesta Select
 - 8 Hyatt Place
 - 9 Fairfield Inn
- SHOPPING**
 - 1 Bachman's
 - 2 Costco
 - 3 Walmart
 - 4 FedEx
 - 5 Eden Prairie Center
 - 6 Holiday
 - 7 Lunds & Byerlys
 - 8 Asia Mall
 - 9 Best Buy
 - 10 CVS
 - 11 Walgreens
 - 12 Menards
 - 13 Scheels
 - 14 Target
 - 15 JC Penney
 - 16 Kohl's
- FITNESS**
 - 1 Life Time Fitness
 - 2 Orangetheory Fitness
 - 3 Pure Barre
 - 4 9Round Fitness
 - 5 Club Pilates
 - 6 Core Power Yoga
- ENTERTAINMENT**
 - 1 Purgatory Creek Preserve
 - 2 AMC Theatres
 - 3 Bowlero
 - 4 Tactical Urban Combat

IN THE HEART OF
Eden Prairie



RECOGNIZED YEAR AFTER YEAR AS ONE OF THE BEST PLACES TO LIVE AND WORK IN MONEY MAGAZINE AND THE NUMBER TWO SUBURB IN MINNESOTA



37 PARKS



17 LAKES



200 MILES OF SIDEWALKS AND TRAILS



NO. 1 PLACE TO LIVE IN MINNESOTA



5,100+ NEW HOUSING DEVELOPMENTS UNDER CONSTRUCTION, BOTH SINGLE AND MULTI-FAMILY



HOME TO THE EDEN PRAIRIE CENTER, WITH 11 MILLION SHOPPERS PER YEAR

The community of Eden Prairie is an attractive live, work, play environment, boasting a median household income of \$111,981, 70% higher than the national average. Nearly 700,000 people live within a ten-mile radius of the property, with 9.4% population growth since 2010. Eden Prairie is one of the largest employment destinations in the Minneapolis market, home to multiple national headquarter locations.

**Work close to home with the quality of life you expect.
Work at Flagship.**





FOR MORE INFORMATION PLEASE CONTACT:

JIM FREYTAG
jim.freytag@cbre.com
952.924.4616

LEASED BY

CBRE

OWNED & MANAGED BY

 **ALTUS**

The information contained herein has been obtained from sources deemed reliable but has not been verified and no guarantee, warranty or representation, either express or implied, is made with respect to such information. Terms of sale or lease and availability are subject to change or withdrawal without notice.