



Immediate Access to
shopping, restaurants, and
hotels, as well as Forest Park
Parkway/I-170 and I-64/40.



Scan for interactive map
of businesses located
near Bemiston Tower.

Bemiston Tower



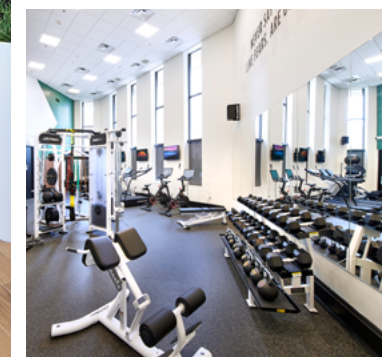
OFFICE
2,505 - 13,970^{SF} AVAILABLE

231 S BEMISTON AVE, CLAYTON, MISSOURI 63105

- Beautiful high-rise views of St. Louis and surrounding areas
- Attached five-level garage with automated access system
- Very short walking distance from the Clayton Metrolink
- Tenant-exclusive bike room, fitness center, lockers, and showers
- On-site café, grab-n-go, and tenant lounge
- Easy access to Forest Park Parkway and Interstate 170



Newly Renovated Building Amenities

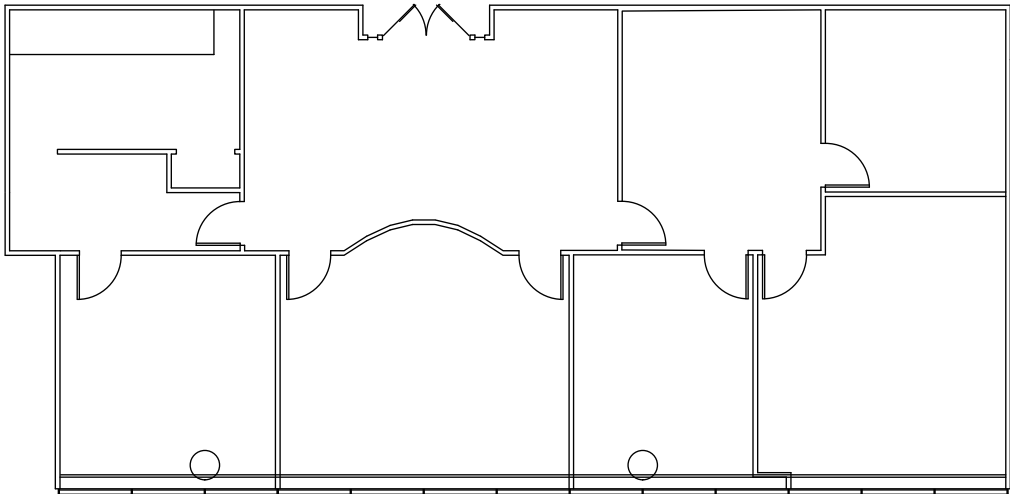


Suite 950 2,505_{SF}

- Now Available
- Elevator lobby exposure
- 4 Private offices
- Conference room

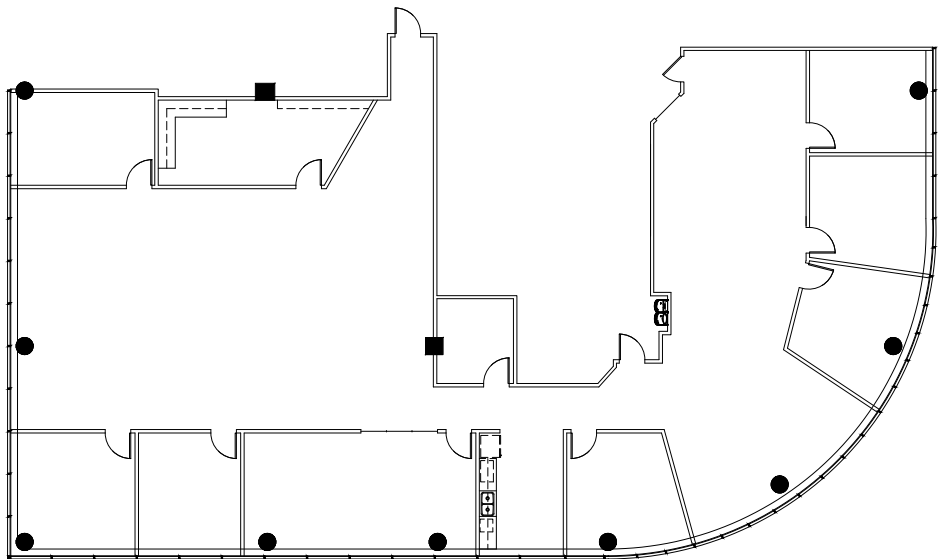


CLICK TO VIEW
VIRTUAL TOUR



Suite 1120 5,497_{SF}

- Available 2/1/2024
- 6 Perimeter private offices
- Fits up to 19 workstations



Suite 400 13,970_{SF}

- Available 8/1/2024
- Exclusive full floor suite
- Demisable down to ≈6,000 SF
- 35 Private offices
- Fits up to 33 workstations
- Five conference rooms

