



**Immediate Access to** shopping, restaurants, and hotels, as well as Forest Park Parkway/I-170 and I-64/40.



# Bemiston Tower



**OFFICE**  
**1,101 - 13,970<sup>SF</sup> AVAILABLE**

**231 S BEMISTON AVE, CLAYTON, MISSOURI 63105**

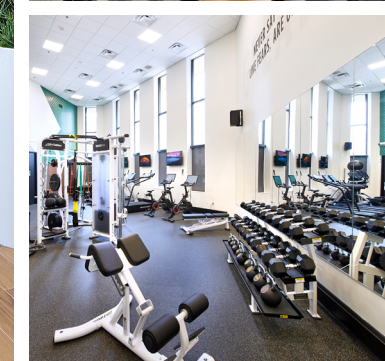
- Beautiful high-rise views of St. Louis and surrounding areas
- Attached five-level garage with automated access system
- Very short walking distance from the Clayton Metrolink
- Tenant-exclusive bike room, fitness center, lockers, and showers
- On-site café, grab-n-go, and tenant lounge
- Easy access to Forest Park Parkway and Interstate 170



## Newly Renovated Building Amenities



Scan for interactive map of businesses located near Bemiston Tower.



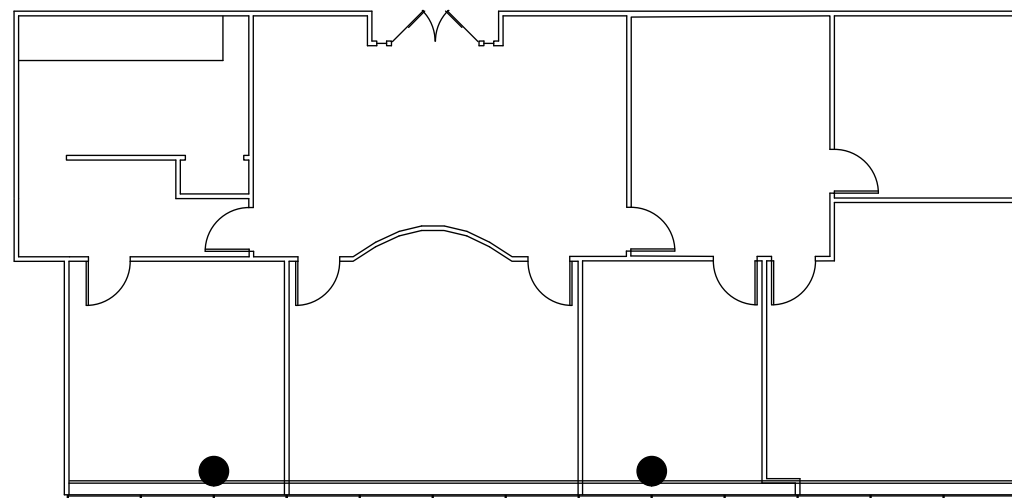


**Suite 950** 2,505<sub>SF</sub>

- Now available
- Elevator lobby exposure
- 4 Private offices
- Conference room

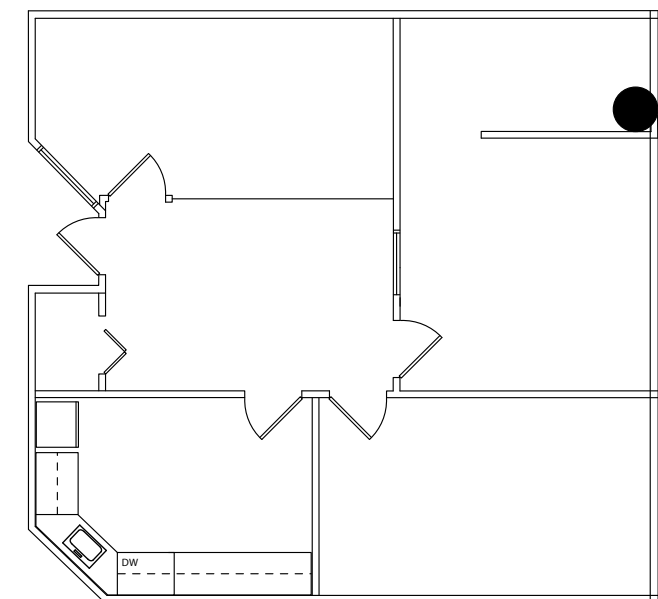


CLICK TO VIEW  
VIRTUAL TOUR



**Suite 250** 1,101<sub>SF</sub>

- Available with 60 days notice
- Reception area
- 2 Private offices
- Glass-front conference room
- Break room with kitchenette

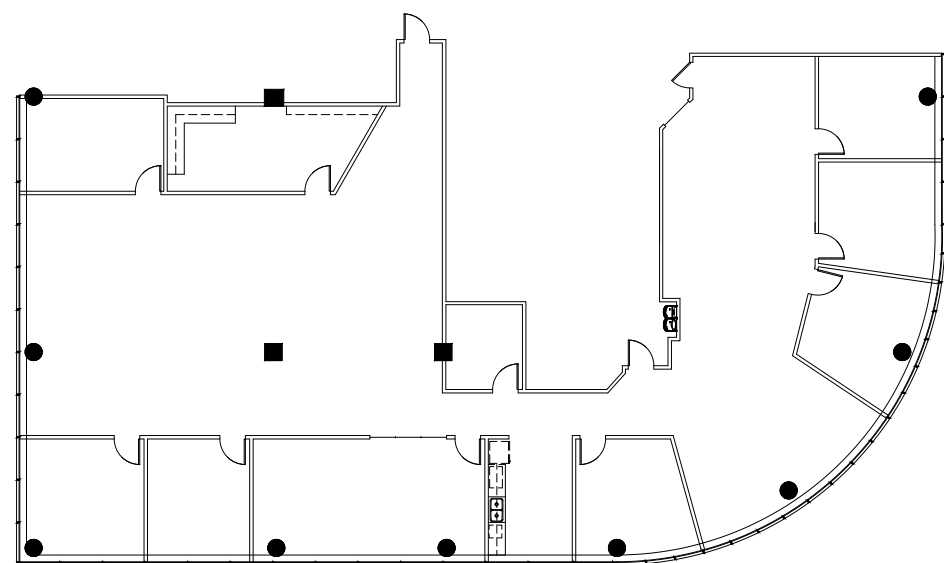


**Suite 1120** 5,497<sub>SF</sub>

- Now available
- 7 Perimeter private offices
- Fits up to 19 workstations



CLICK TO VIEW  
VIRTUAL TOUR



**Suite 400** 13,970<sub>SF</sub>

- Available 8/1/2024
- Exclusive full floor suite
- Demisable down to ≈6,000 SF
- 35 Private offices
- Fits up to 33 workstations
- Five conference rooms

