



2010 16th Street

Boulder, CO

Restaurant Space Available in **Downtown Boulder**

Chris Boston, CCIM, MBA

cboston@gibbonswhite.com
(303) 586-5930

Kegan McNutt

kegan@gibbonswhite.com
(303) 586-5929

www.gibbonswhite.com

[Property Info & Gallery](#)

[View Map](#)

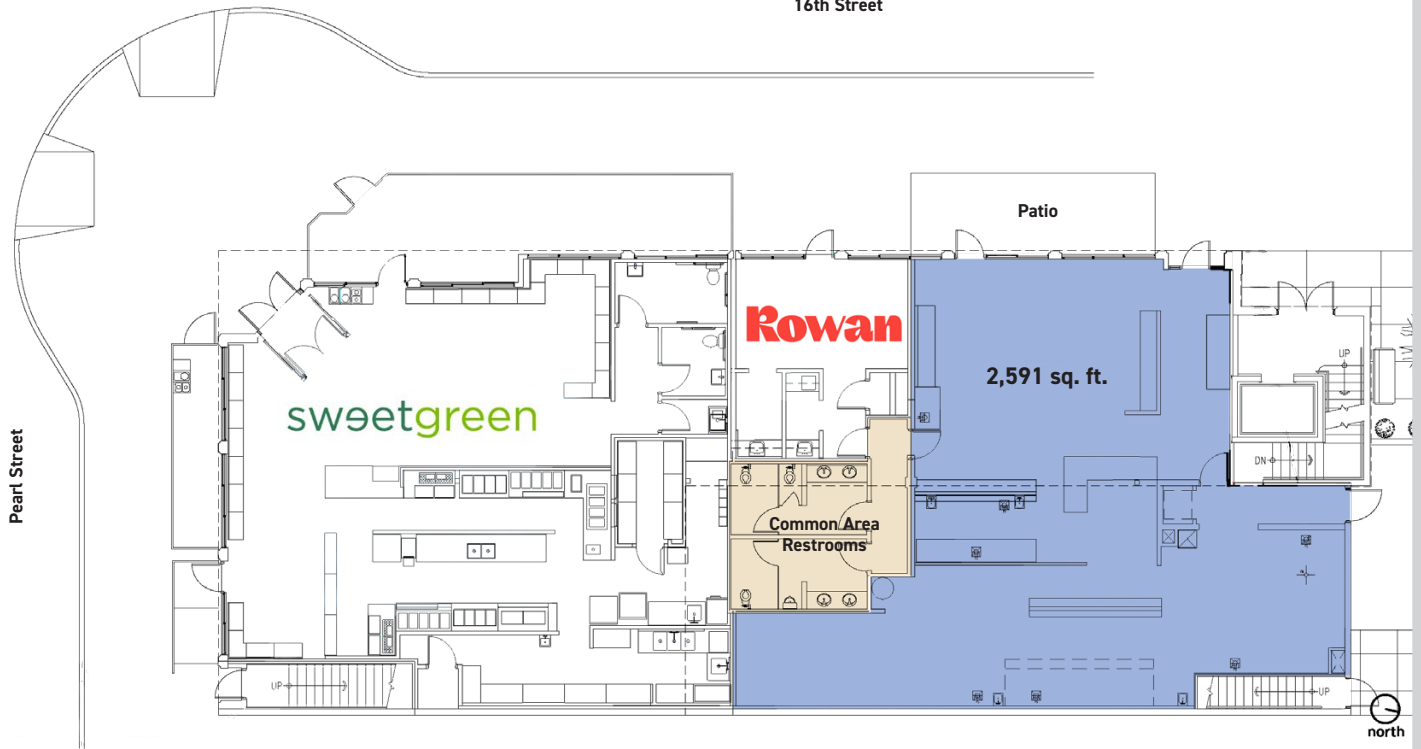
Available Space	2,591 sq. ft.
Lease Rate / sq. ft.	Negotiable

- Significant Restaurant Infrastructure in Place
- Operable Windows with an Abundance of Natural Light & Great Outdoor Patio Area
- Additional 1,797 sq. ft. Basement Space Available (\$15.00 Gross) That Includes Dumbwaiter Elevator Access, 2 Private Offices & Restrooms
- Great Neighboring Tenants Including: Sweetgreen, Snooze, Arc'teryx, Patagonia, Mountain Sun, Postino, Montbell & Many Others



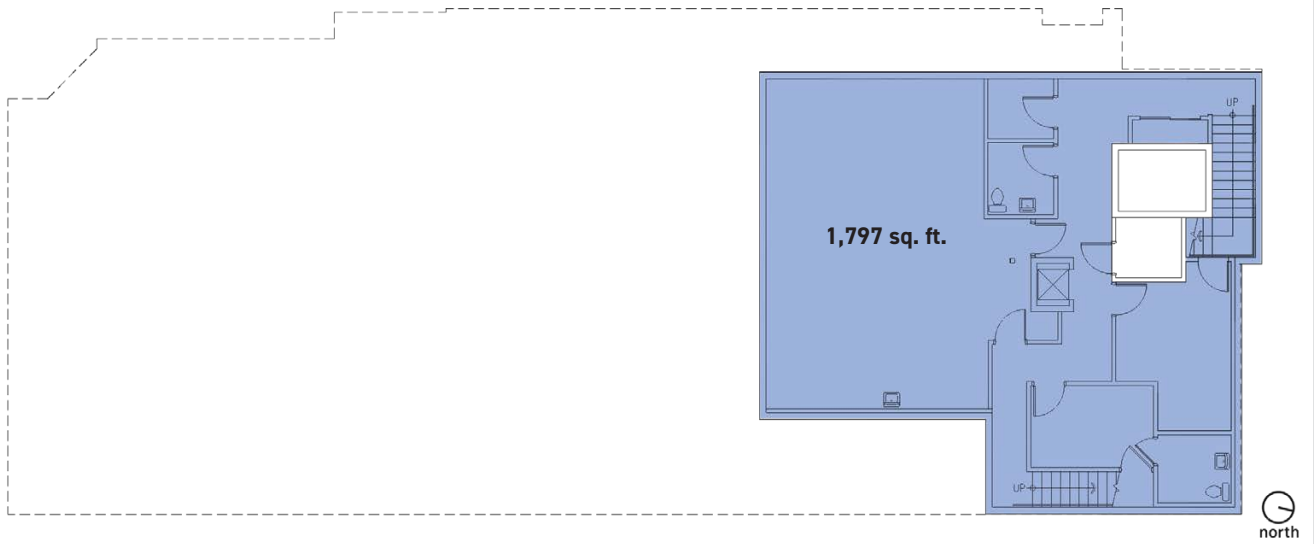
2010 16th Street
Main Level

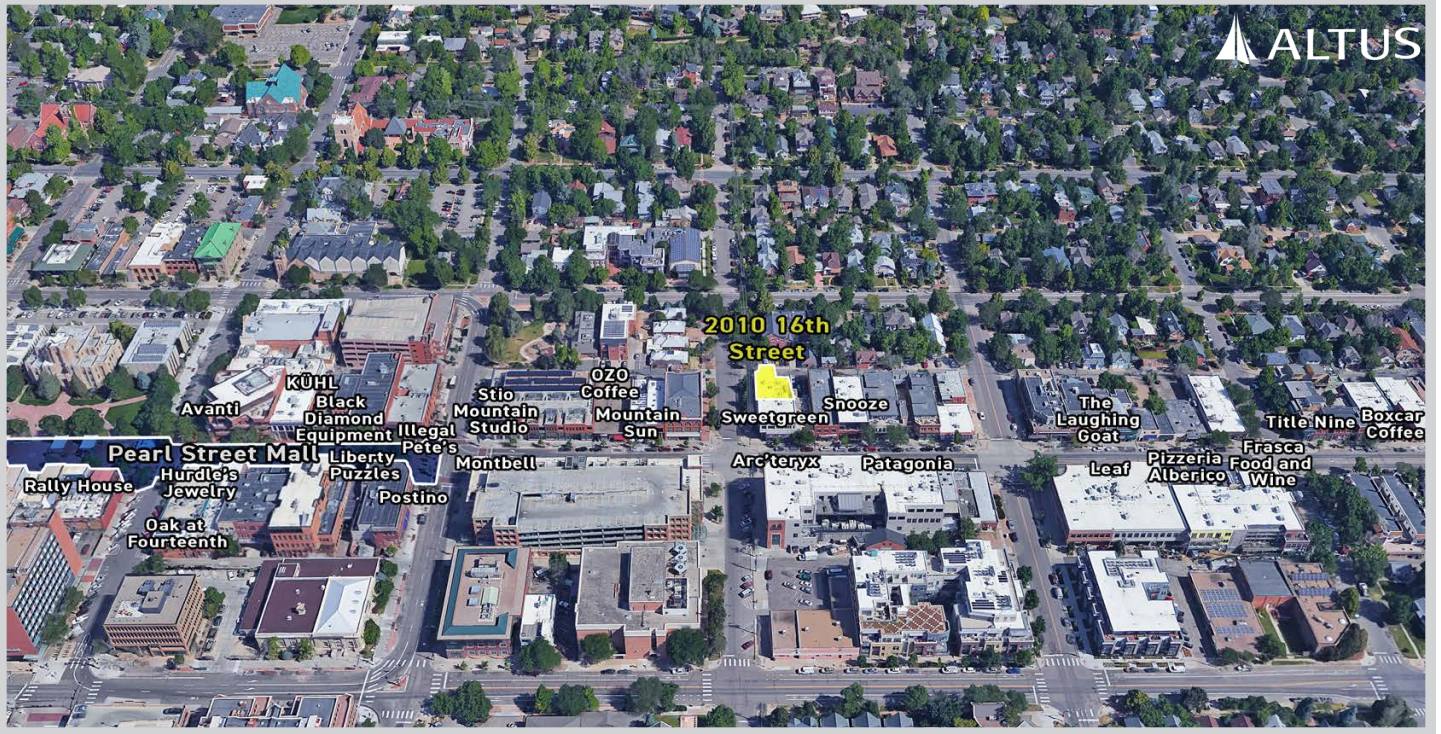
16th Street



2010 16th Street
Basement

16th Street Above





#1 Best Place to Live and Work in America

- Powerlytics



"America's Startup Capital"

- INC.

The #1 Happiest City in America

- Forbes