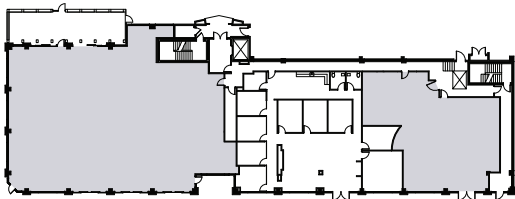
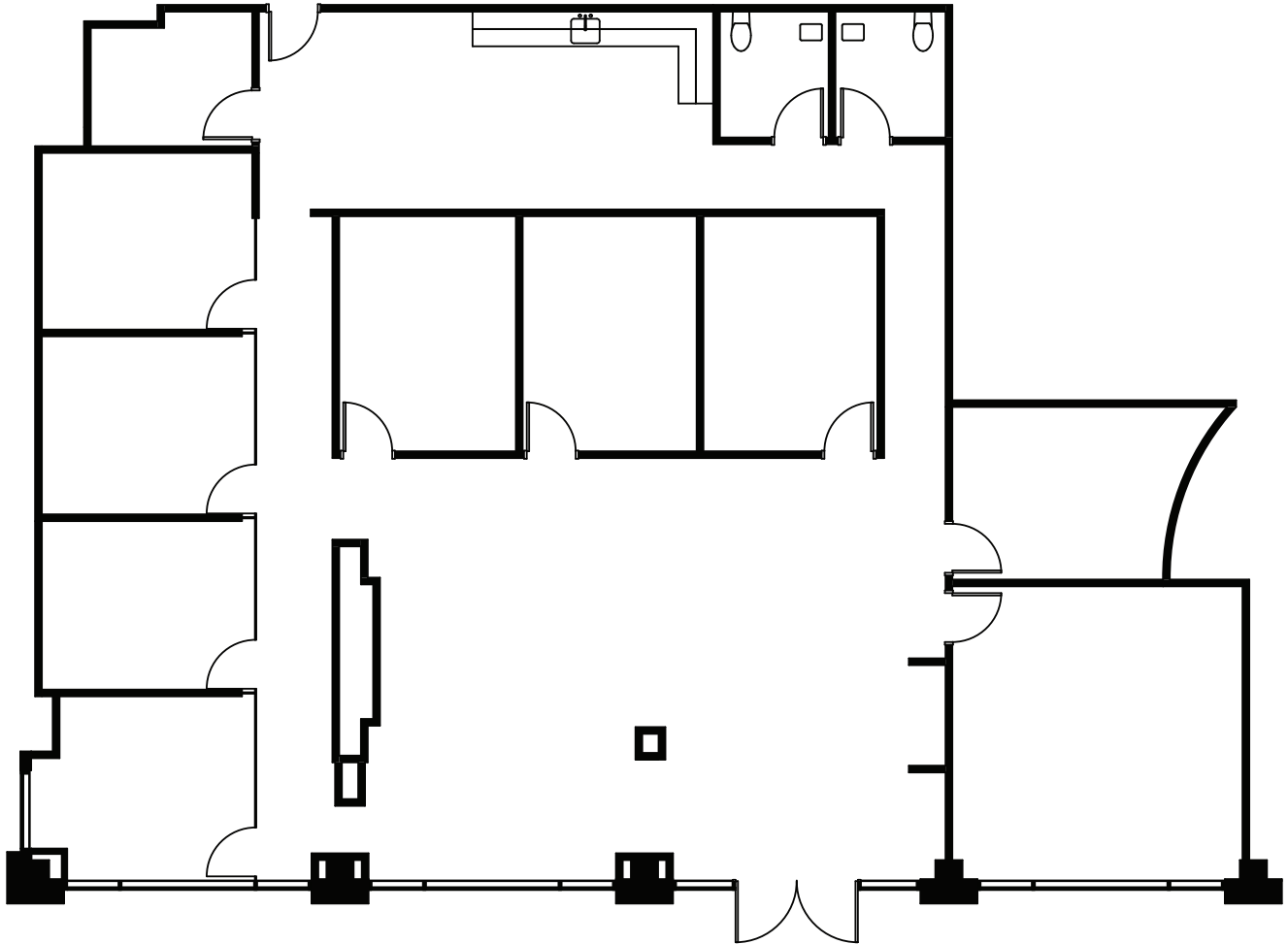


2ND & JO

201 COLUMBINE STREET
SUITE 130
AS-BUILT 3,909 SQ. FT.



* Dimensions are Deemed as Accurate but not to Scale

FOR MORE INFORMATION, PLEASE CONTACT:



Blake Holcomb
First Vice President
+1 303 583 2022
blake.holcomb@cbre.com

Brian Hutt
First Vice President
+1 303 583 2041
brian.hutt@cbre.com



Julie McBrearty
Vice President
+1 303 534 0900
jmcbrearty@sullivanhayes.com

PROPERTY OWNED BY

